

# Chronic Homelessness in Santa Clara County

---

Impacts of Homelessness on Creeks

March 29, 2011



Destination: Home  
*Housing Our Community*

# What is Destination: Home?

---

- Public-private partnership ending chronic homelessness in Santa Clara County
- Implements strategies of the 2007 Blue Ribbon Commission on Homelessness and Affordable Housing



Destination: Home  
*Housing Our Community*

# Destination: Home's Priorities

---

- Focus on chronically homeless individuals, veterans, and people leaving public systems
- Redirect public and private resources into permanent housing outcomes



Destination: Home  
*Housing Our Community*



# THE FACTS

---

- 7,086 homeless people reside in Santa Clara County with 70% considered unsheltered
- 2,270 are defined as chronically homeless
- Of the 4,983 unsheltered homeless residents in Santa Clara County, 752 people reside in illegal encampments (644 in San Jose alone)

# THE COST

---

Annual cost to permanently house (and provide treatment and case management) to a formerly homeless person



Annual cost of one chronically homeless person using Emergency Room services

# THE IMPACT



- The average life expectancy of a chronically homeless person is 47 years of age
- Homeless people suffer illnesses at rates three to six times higher than those with homes
- 51 homeless men and women died in the streets of Santa Clara County in 2010



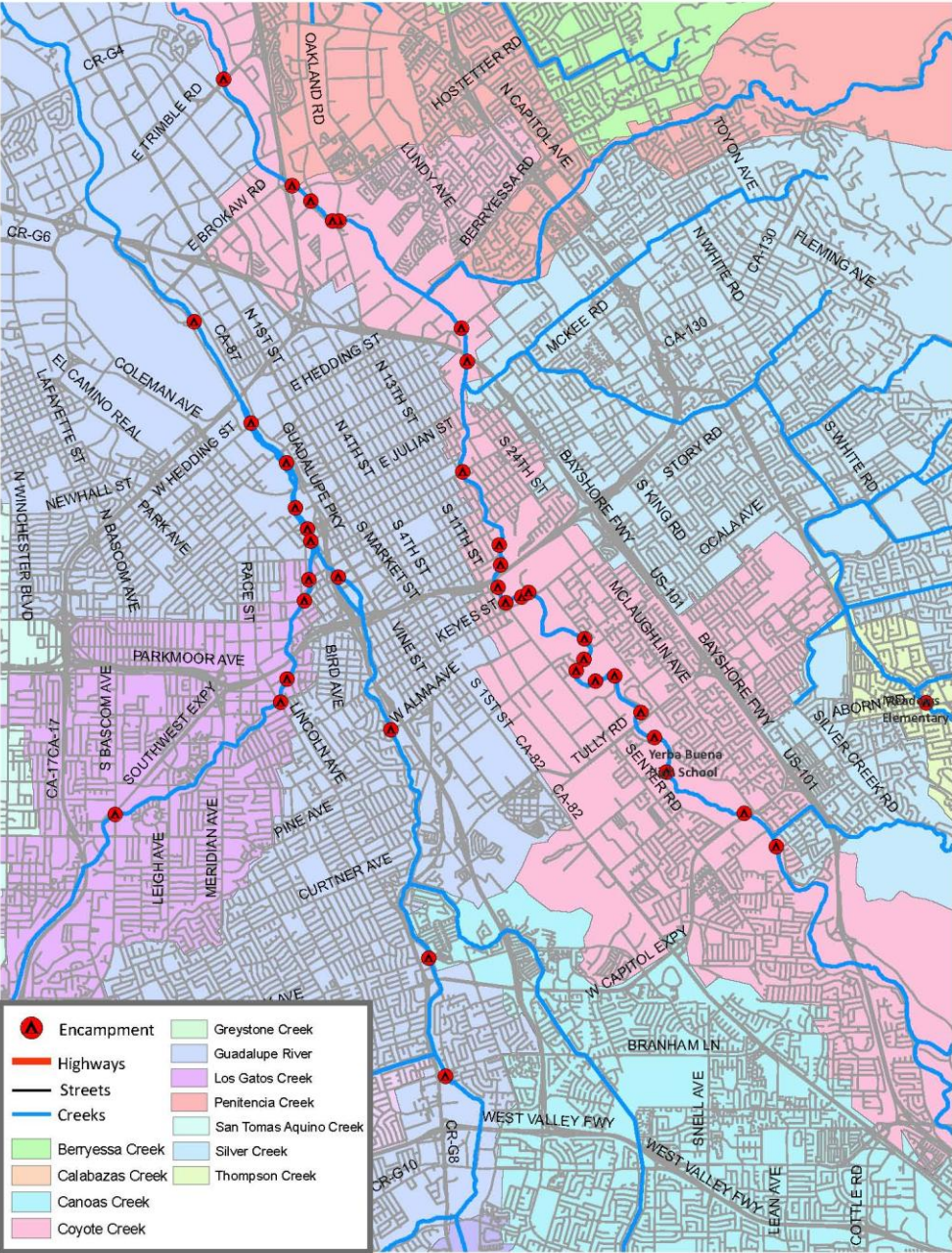
# Encampment Outreach History

---

- City of San Jose Housing Department facilitated outreach efforts to the homeless living in illegal encampments since 1990's
- San Jose Police Department post notices of cleanups 72 hours in advance
- Social service agencies working in silos to outreach to homeless on streets without permanent solutions
- Lack of coordination with environmental organizations



# Illegal Encampment Sites-San Jose





# Ending Chronic Homelessness

- A county-wide shift from managing to ending homelessness focusing on systems change and rapid and sustained access to permanent housing





# HOW?

---

- Outreach and engagement with intensive case management
- House homeless people within 60 days of program or service entry or exit
- Ensure homeless people maintain housing for at least 12 months
- Align service outcomes with focus on permanently housing 1000 of the most vulnerable in Santa Clara County by 2013
- New and innovative programs with permanent housing focus.



# Encampment Pilot Project

---

- Partnership with ESD, Santa Clara Valley Water District, EPA, Destination: Home, Downtown Streets Team, eBay Foundation
- Permanently house 50 encampment residents from Coyote Creek
- Restore environmental quality



---

Questions?

Comments?



Destination: Home

*Housing Our Community*