

# Fisheries and Aquatic Habitat Collaborative Effort

**September 1, 2005**

**Pat Showalter 408 265-2607 ext 2939**

**[pshowalter@valleywater.org](mailto:pshowalter@valleywater.org)**

# **Fisheries and Aquatic Habitat Collaborative Effort**

*is abbreviated to*

**F.A.H.C.E.**

*And pronounced 'face'*

# **FAHCE is about **BALANCING**** ***beneficial uses of***

- Water supply needs
- Fisheries protection
- Flood protection
- Recreation

# FAHCE Chronology

- Complaint phase- led to formation of FAHCE process
- Negotiation phase- led to initialing of the draft *Settlement Agreement*
- Environmental Evaluation phase- leads to settling of the complaint before the State Board

# FAHCE Chronology cont.

- Water Rights Process Phase-Leads to State Board approving Settlement
- Implementation phase- settlement actions will be carried out

# **FAHCE Participants**

- **California Department of Fish & Game**
- **US Fish & Wildlife Service**
- **National Marine Fisheries Service**
- **Natural Heritage Institute**
- **SF Bay Regional Water Quality Control Board**
- **City of San Jose**
- **Santa Clara Valley Audubon Society**

# FAHCE Committees

- **Consensus Committee-** decision making group of FAHCE stakeholders who worked out draft *Settlement Agreement*
- **Technical Advisory Committee-** conducted biological studies and flow modeling to answer technical questions raised by the Consensus Committee

# **Key Benefits of Settlement Agreement**

- Improves conditions for fisheries and aquatic resources
- Protects local water rights
- Provides clear operational guidelines
- Integrates with Santa Clara Valley Habitat Conservation Plan (HCP)



# FAHCE Governance

- **Consensus Committee** works through negotiation and interim phases
- **Adaptive Management Team** formed at Effective date to oversee the implementation of FAHCE—composed of representatives of the same agencies included in Consensus Committee

# **Categories of the FAHCE Settlement**

- Reservoir Operation Changes
- Fish Passage Improvement
- Habitat Restoration

# Settlement Agreement Overview

- 3-10 year implementation phases
- \$42 M funding maximum per phase
- Phase 4 is perpetual and includes ongoing maintenance and monitoring
- Participation in Phases 2-3 dependent on continued need to meet management objectives

# Reservoir Operation Changes

- **Cold Water Management Zones-** release water from reservoirs to supply water of adequate depth and temperature for spawning and rearing of steelhead trout
- **Fish Management Zones-** release water from reservoir to support fall-run Chinook Salmon

# **FAHCE Watersheds (Affected Reservoirs)**

- Guadalupe (Lexington, Guadalupe, Almaden, Calero)
- Coyote Creek (Anderson, Coyote)
- Stevens Creek (Stevens Creek)

# Fish Barrier Improvements

- Phase 1 specifies the improvement of 15 barriers.
- As currently planned, district-owned barriers will be removed and SCVWD will fully fund
- Non-district owned barriers will be improved with 50% funding by SCVWD

# Habitat Restoration

- At least 2000 running feet of riparian restoration in each FAHCE watershed
- Gravel placement for spawning

# Notice of Intent- NOI required under NEPA

Published in the Federal Register  
on August 4, 2005



# Notice of Preparation– NOP- required under CEQA

Both documents found on the  
SCVWD's website

# Purpose of NOI and NOP

- Provides an opportunity for the public to review the scope of the alternatives and impacts that will be investigated under the Environmental Impact Report (EIR)/ Environmental Impact Statement (EIS) and suggest changes.
- Legally required under CEQA and NEPA

# FAHCE Scoping Strategy

- Broader range of alternatives than normal
- Preparation for presenting case to the State Board
- Attempt to investigate questions might be asked during the State Board hearings

Draft *Settlement Agreement* is  
the project description for the  
EIS/EIR.

# **Alternatives in NOI and NOP**

- 1. No Action Alternative**
- 2. Flow Adjustments**
- 3. Flow Adjustments and Removal of District Owned Barriers**
- 4. Recycled Water Investigations**
- 5. Augment Flow with Other Water Supplies.**
- 6. Flow to the Bay**
- 7. Maximize the Wetted Zone**
- 8. Natural Conditions**
- 9. Hatchery**
- 10. Raise Dam face**
- 11. Extend Timetable**

# Comments and Questions

Thank you!

# FAHCE Webpage

- Go [www.valleywater.org](http://www.valleywater.org)
- Click on Short Cuts bar at top right
- Scroll down to FAHCE and click

# FAHCE Webpage

- Go to [www.valleywater.org](http://www.valleywater.org)
- Find Short Cuts bar at the top right
- Scroll down and click on FAHCE



# FAHCE Guadalupe River Watershed



**Legend**

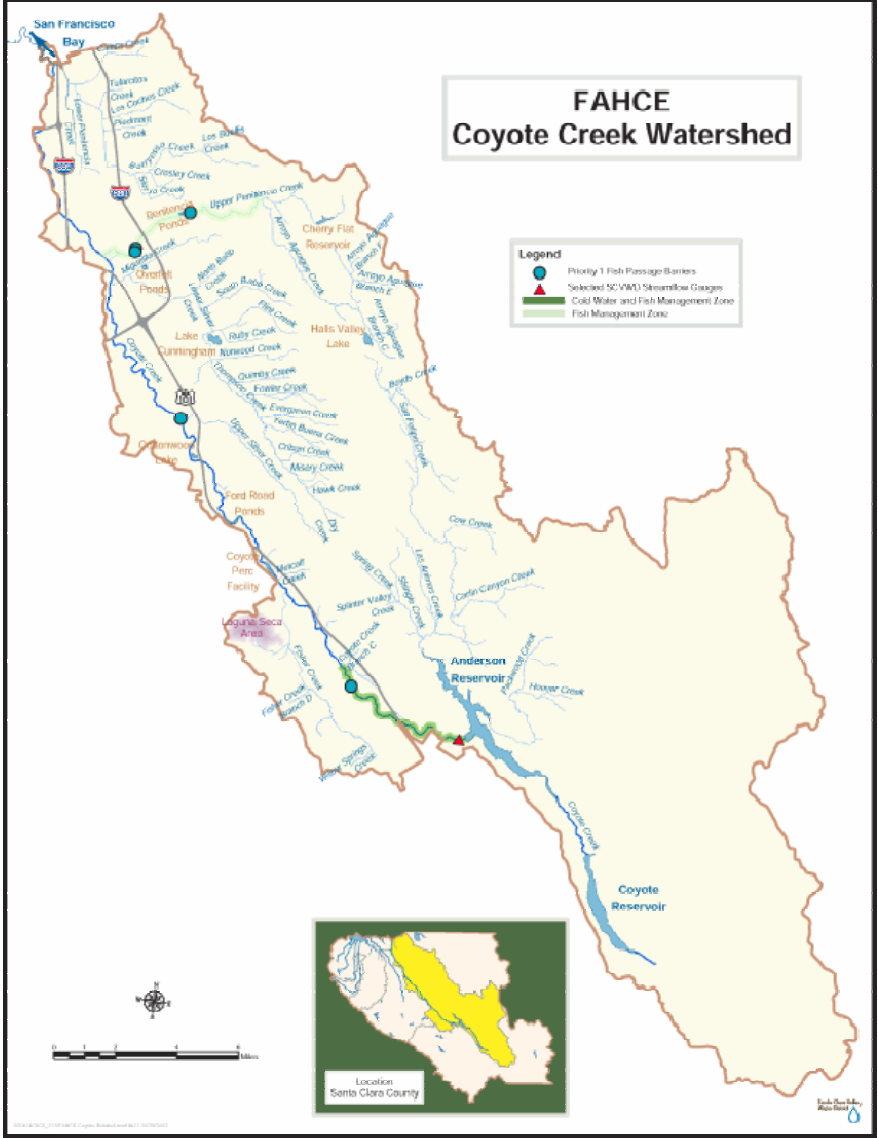
- Priority 1 Fish Passage Barriers
- ▲ Selected SCUWD Streamflow Gauges
- Fish Management Zone
- Cold Water & Fish Management Zone



# FAHCE Coyote Creek Watershed

**Legend**

- Priority 1 Fish Passage Barriers
- Selected SCWMD Streamflow Gauges
- Cold Water and Fish Management Zone
- Fish Management Zone



# FAHCE Stevens Creek Watershed

- Legend**
- Priority 1 Fish Passage Barriers
  - ▲ Selected SCWD Streamflow Gauges
  - Cold Water & Fish Management Zone

