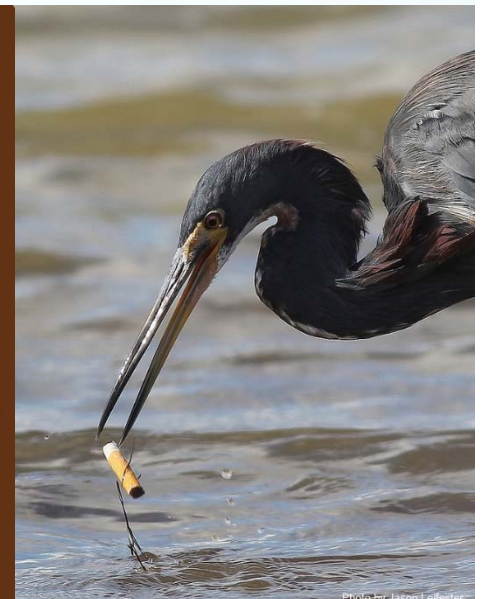




# Trash Management Webinar #2

## *Reducing the Impacts of Smoking on Stormwater Quality*

Tuesday, January 30th, 2018  
10 am – 11:30 am (PST)



# Welcome

---



**Moderator**  
Chris Sommers  
Managing Scientist  
EOA, Inc.

---

# Zero Litter Initiative

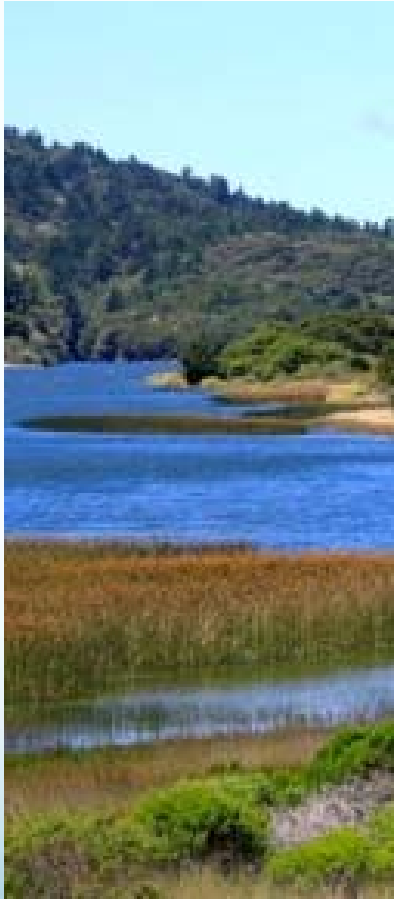
---



- Subcommittee of Santa Clara Basin Watershed Management Initiative (WMI)
  - Formed in 2010
  - Includes representatives from cities, counties, and transportation agencies
  - ZLI Mission - combat the multi-faceted litter problem by bringing stakeholders together to identify collaborative solutions
  - Previously conducted roundtables on the water quality impacts of homelessness and litter associated with garbage/recycling collection
  - First webinar (*The Nexus Between Solid Waste and Stormwater Management*) in October 2016
-

# Impetus for Webinars

---



- Trash impacts many San Francisco Bay Area creeks and shorelines
  - Bay Area (and nearly all other California) municipalities are required to significantly reduce trash
  - Smoking-related items are the most frequently observed items in local waterways
  - Reducing smoking-related litter can assist municipalities in achieving these goals
-

# Webinar Outline

---

- **Water Quality, Tobacco Product Waste and Toxicity: What to Do About the Butts**

*Dr. Thomas Novotny: SDSU and Cigarette Butt Pollution Project*



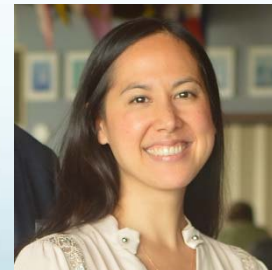
- **Kick Some Butts! - Legal and Policy Solutions for Addressing Tobacco Waste**

*Maya Hazarika Watts, JD: ChangeLab Solutions*



- **Keep Your Butts out of Our Bay!**

*Allison Chan: Save the Bay*

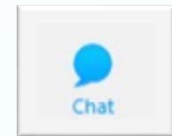


- **Question and Answer**
-

# Asking Questions (Chatting)

---

- Feel free to submit questions during the Webinar
- Do so by typing in the chat box
  - If you don't see the chat box, try clicking on the "Chat" icon in the upper right portion of your screen
- Be sure to select **Don Eisenberg (Host)** in the "Send to" dropdown menu before you submit the question

A screenshot of a chat interface. At the top, there is a dropdown menu labeled "Send to:" with the text "Don Eisenberg (Host & Presenter)" and a downward arrow. Below this is a text input field with the placeholder text "Type your questions here" in green. To the right of the input field is a "Send" button. A yellow arrow points from the text "Be sure to select Don Eisenberg (Host) in the 'Send to' dropdown menu" to the dropdown menu.

---

# Question & Answer

---

# Thank you for participating!

---

- Webinar will be posted soon at: [www.scbwmi.org](http://www.scbwmi.org)
- Post-webinar survey will be sent out to attendees
- Stay tuned for additional information on future ZLI webinars

## For Additional Information:

Peter Schultze-Allen

EOA, Inc.

[pschultze-allen@eoainc.com](mailto:pschultze-allen@eoainc.com)

510-832-2852 x128

---